



GMT MONTHLY MEMBERSHIP PROGRESS REPORT

Results as of: 5/31/2020

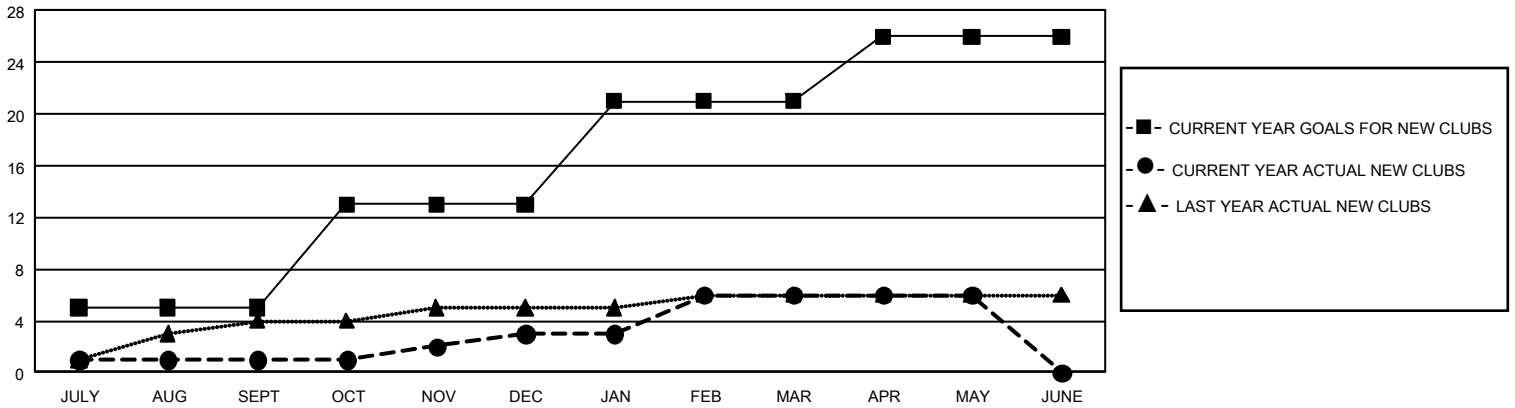
GMT Constitutional Area 2, Group B

GMT: OPEN

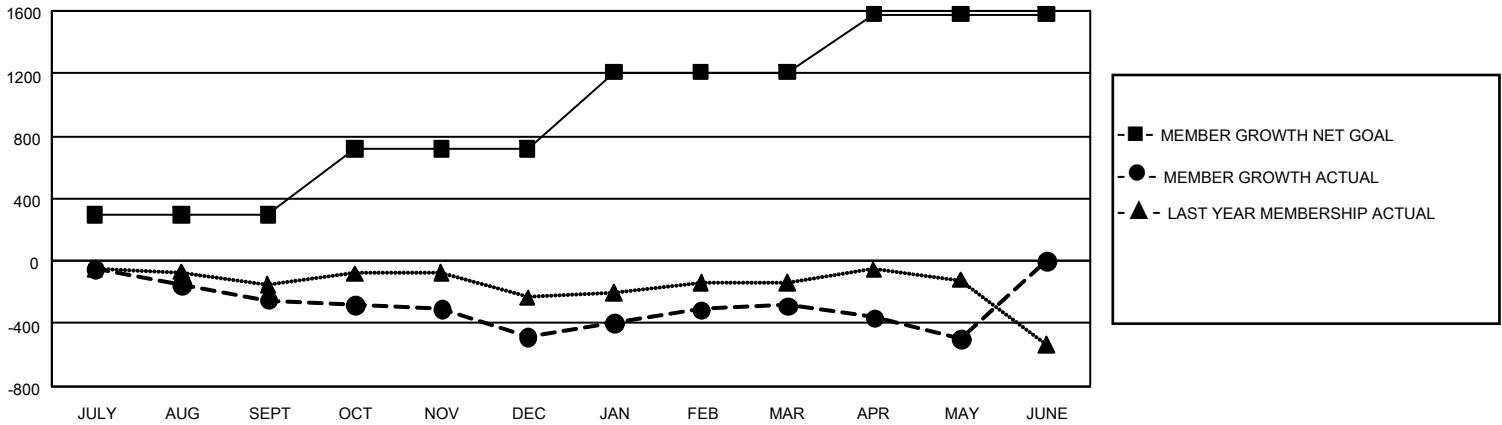
REPORT DOES NOT INCLUDE CLUBS IN UNDISTRICTED AREAS.

Clubs				Members			
RESULTS FOR 2019-2020				RESULTS FOR 2019-2020			
QUARTER	NEW CLUB GOAL	NEW CLUBS	DROPPED CLUBS	QUARTER	MEMBER GROWTH NET GOAL	MEMBER GROWTH ACTUAL	DROPPED MEMBERS ACTUAL (including transfers)
JULY/AUG/SEPT	15	1	3	JULY/AUG/SEPT	885	337	530
OCT/NOV/DEC	24	2	3	OCT/NOV/DEC	1,266	578	761
JAN/FEB/MAR	24	3	4	JAN/FEB/MAR	1,470	704	434
APR/MAY/JUNE	15	0	1	APR/MAY/JUNE	1,119	212	366

GOALS AND ACTUAL NEW CLUBS CUMULATIVE



GOALS AND ACTUAL MEMBERS CUMULATIVE



DROPPED CLUBS: 11	518 CLUBS OF 931 ADDED 1 OR MORE NEW MEMBERS	<u>GENDER DISTRIBUTION</u> MALE 14,421 (66.12%) FEMALE 7,389 (33.88%)
<u>DROPPED MEMBERS</u> DECEASED 347 CLUB CANCELLED 47 OTHER 1,697 <hr/> TOTAL 2,091	CLICK HERE FOR CUMULATIVE MEMBERSHIP DATA	TOTAL FAMILY UNIT MEMBERS 4,103 FAMILY MEMBERS PAYING HALF DUES 2,091